

JANUARY-FEBRUARY 2010

VERANDA



VERANDA'S DESIGNER VISIONS SHOW HOUSE

SALADINO IN SOHO



INTERIOR DESIGN BY JOHN SALADINO ARCHITECTURE BY GWATHMEY SIEGEL ASSOCIATES
PHOTOGRAPHY BY ANTOINE BOOTZ PRODUCED BY CAROLYN ENGLEFIELD TEXT BY CATHERINE LEE DAVIS





For me, that which
is divine, rests in
the pursuit of beauty.

John F. Saladino



AS ONE OF THE GREAT DUTCH PAINTERS OF THE SEVENTEENTH CENTURY, JOHANNES VERMEER TRANSFORMED SCENES OF EVERYDAY LIFE INTO masterpieces revered for their silent intensity, purity of light and form. Drawing parallels to his own work, renowned designer John Saladino chose the Vermeer-based film *Girl With a Pearl Earring* as his inspiration for the VERANDA show house at SoHo Mews, a modern condominium building located in Manhattan's trendy Soho neighborhood. As one of three townhouses decorated by designers in a cinema style for magazines within the Hearst Corporation, this two-bedroom unit reflects the spirit and poetry of the iconic film through Saladino's mastery of light, color and scale. "It was easy for me to see that the Vermeer references would work with what I believe makes beautiful interiors," says Saladino.

To recreate the quiet, intimate mood of Vermeer's paintings, Saladino and Project Director Ivan Chatman used a soft, neutral palette of creamy whites, deep taupes and rich pewter carefully orchestrated with lavender and periwinkle blue accents—some of Saladino's favorite colors—and reminiscent of the girl's headdress in the painting. Snowy, white walls in the living room contrast with warm, earthy tones, sumptuous fabrics and dark leather chairs in the dining room, which functions as the night space or "womb" of the house. The scratch-coat plaster on living room and breakfast nook walls suggests the layering of time, and this treatment is reintroduced in the stairwell as a minimalist painting. Upstairs, a dark gray corridor not only hides a multitude of hinges and doors along the wall but also has a tunnel effect as it leads to the crisp white master bedroom.

Referencing both the painting and the movie, Saladino plays with light to create drama

OPENING PAGES: In SoHo Mews show house living room, all upholstered furnishings from Saladino Furniture Inc. SFA Interiors shutter screen designed by Saladino Group. Round oak table and glass bottle from Kay O'Toole made into lamp by designer. Scandia Home's lilac cashmere throw over chair. On wall, rectangular and large round mirrors from Amy Perlin Antiques. Karastan rug. Design Within Reach wooden stool. Designer's lavender throw, cube table and small wall mirror. ABOVE LEFT: Copy of Vermeer's *Girl With a Pearl Earring*, Saladino's inspiration for the show house, beside his sketch. ABOVE RIGHT: Leather chairs, 19th c., from Amy Perlin Antiques. OPPOSITE: Woven-leather coffee table and antique bottles from Saladino Furniture Inc.





OPPOSITE: In breakfast nook between living room and kitchen, Exquisite Surfaces antiqued flooring sets tone. Europa bench with pillow from Upstairs at Pierre Lafond. Holland & Company table and stool. Artwork and tablecloth from designer. NDI plums. Scratch-coat walls throughout by Silver Lining Interiors/Metropolitan Paint NYC.

THIS PAGE: In living room, tapestry from Galerie Shabab presides over console table from Amy Perlin Antiques with antique stone balustrades from W. Gardner made into lamps by designer. Arte Italica barware. Leather chair, ottoman and table from Saladino Furniture Inc. Ralph Lauren wall and ceiling paint throughout.



"I TRIED TO GIVE



THESE ROOMS AN ALMOST **ETHEREAL** LIGHT."





PRECEDING PAGES: In dining room beyond kitchen, sofa, Balustrade dining table, candlesticks, pair of chairs, desk and leather club chair from Saladino Furniture Inc.

Art by Victoria Adams. Robert Altman floor lamp. Tableware from Arte Italica. Karastan rug.

ABOVE LEFT TO RIGHT: Liebherr refrigerator and wine cooler in kitchen with Dacor stove, cooktop, microwave and dishwasher.

OPPOSITE: Arte Italica pewter chargers on wall above Barclay console from Saladino Group. Ceramic platter from Upstairs at Pierre Lafond. NDI pears in bowl.

through the use of discreet lighting and backlit sofas and beds. To augment the natural light, Saladino and his team used mirrors to open up the space. "I followed Vermeer's philosophy, which was to take vernacular objects and imbue them with transcendence," the designer explains. "I tried to give these rooms an almost ethereal light."

He manipulates scale in the living room by creating a separate breakfast nook using smaller furniture. In the master bedroom, he softens the space with optical illusions, floating the bed away from the wall while blending it in with a monochromatic palette. A mesh half-canopy, rather than a full four-poster, accommodates the room's scale, while a floor-to-ceiling mirror opposite ten-foot shutters creates the illusion of a corridor to a larger room.

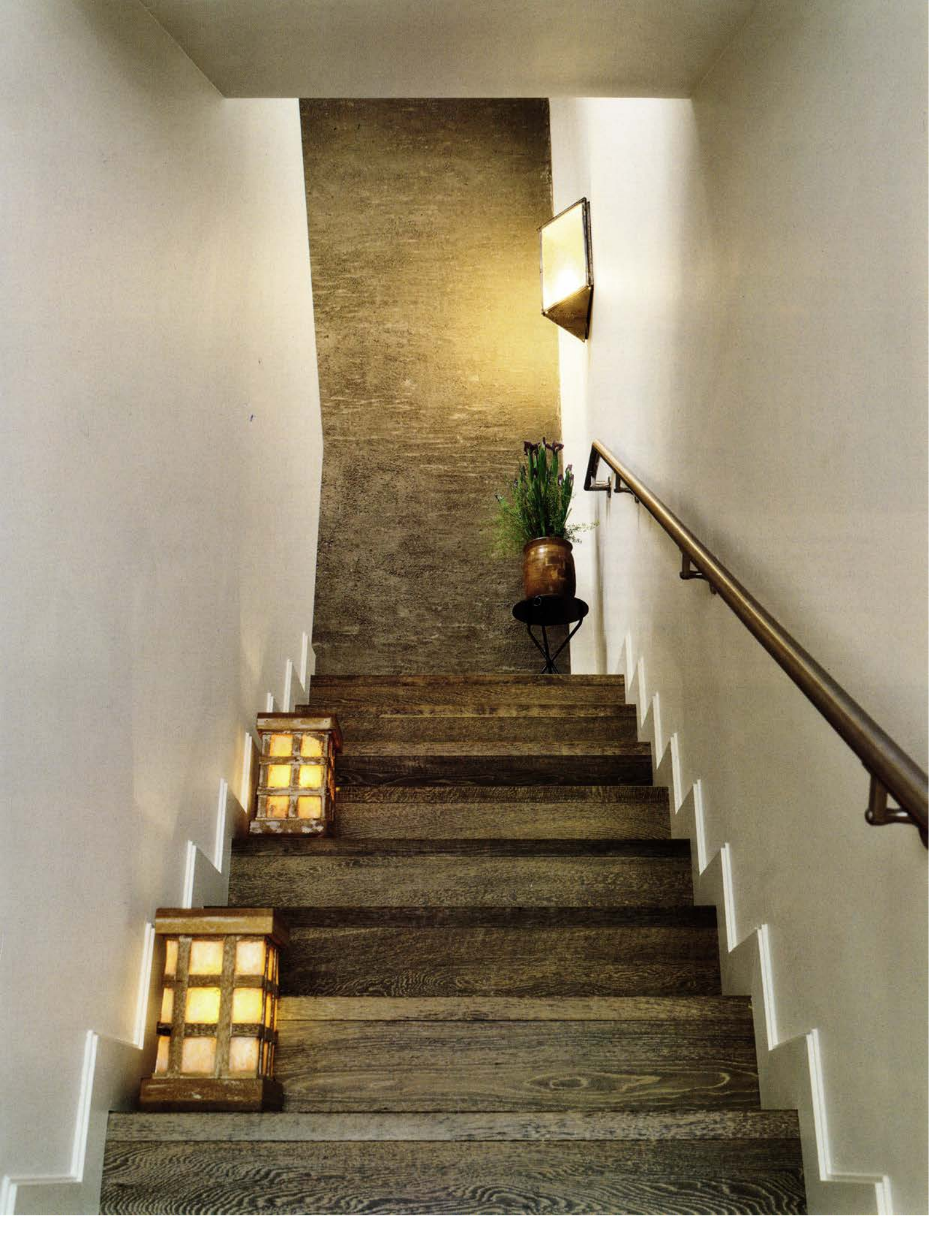
In keeping with his philosophy of juxtaposing old with new, Saladino makes seventeenth-century references to the film while mixing antiques and pieces from his own furniture collection in a modern way. Subtle metal studs and trim are added to pillows and upholstered pieces. Bedroom shutters and a folding screen in the living room resemble shutters used in traditional Dutch houses. Several oriental rugs cover antique-engineered oak floors that look like the silver-gray, scrubbed wooden floors of a vintage Dutch residence. Hanging tapestries, which also served as insulation, recall Dutch decor. Curtains draped throughout the house not only introduce an element of mystery but also help absorb noise in keeping with the meditative silence Vermeer's artwork projects.

From delft vases and pewter plates to wooden butter jars, Saladino carefully edits every detail to refine his overall vision. He is concerned not only with what is in a room, but also with what is not. Says Saladino, "I am always thinking abstractly, so I bring the attitude of a fine artist to my work. Every room is a walk-in still life." □





CLOCKWISE FROM TOP LEFT: Entry terrace with NDI ivy in Phoenician Stone planters; birch tree from Holly, Wood & Vine; McGuire chairs around Saladino's Triple X table. Second floor landing with mirror from Amy Perlin Antiques and Europa bench; antique rug on wall and star light from Saladino Furniture Inc. Bathroom with Kohler fixtures, copies of Vermeer artwork, Scandia Home towels and Amy Perlin Antiques round mirror. In living room, Holland & Company table; charger and lamp from Saladino Furniture Inc.; Amy Perlin Antiques jars; artwork by Power Boothe. OPPOSITE: In stairwell, sconce and table from Saladino Furniture Inc. McGuire lanterns. Jar from Amy Perlin Antiques. Stair finishing by Exquisite Surfaces.





ABOVE AND BELOW: In master bedroom, stool from Saladino Furniture Inc. Chair and vanity mirror from Amy Perlin Antiques. Karastan rug on floor by Exquisite Surfaces. On Henredon walnut console, blue and white delft vases surround shell holding Chopard pearl earrings. RIGHT: Tempur-Pedic bed covered in Scandia Home linens. Maple bed and antique side table from Saladino Furniture Inc. SFA Interiors shutters, canopy and skirt designed by Saladino Group. Linen coverlet from Upstairs at Pierre Lafond.



